

PW-ROWFDOT

\*Project Name= Celery Ave aka SR 415

FDOT Section #= 77050

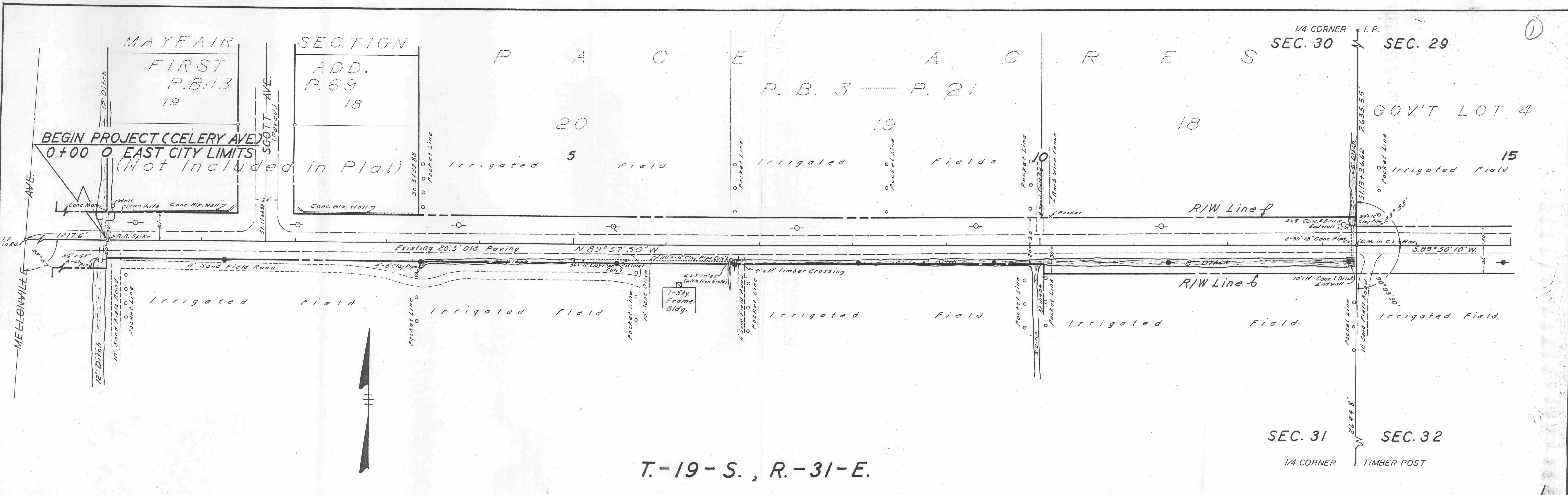
Doc Date= 5/29/1963

Section/Township/Range= 051931

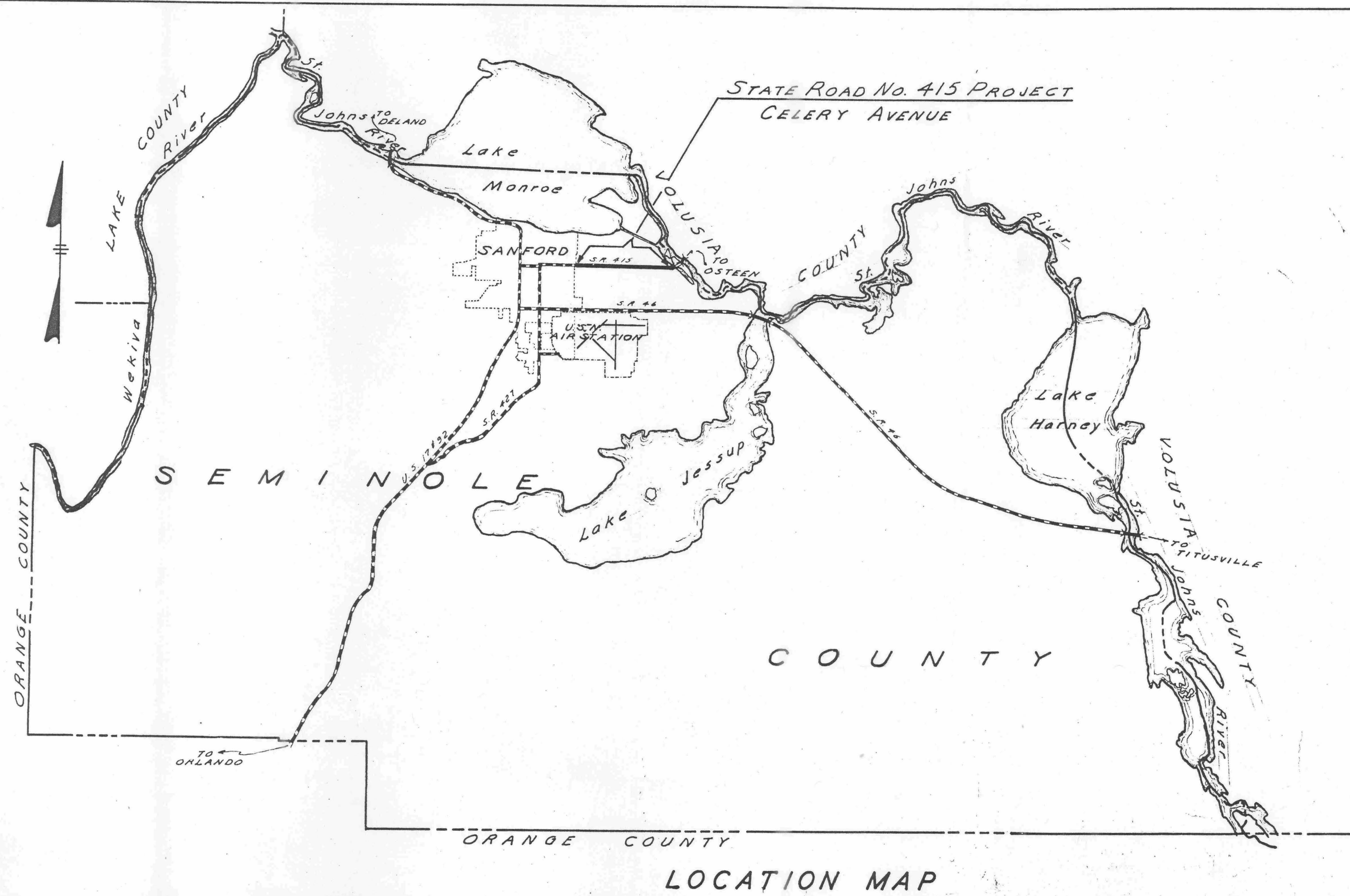
notes= Celery Avenue / maintenance map

PW-IndexNum= 65





T.-19-S., R.-31-E.



LOCATION MAP

77050

SEMINOLE COUNTY ENGINEERING DEPARTMENT SEMINOLE COUNTY, FLORIDA	
<b>STATE ROAD NO. 415 CELERY AVENUE</b>	
DRAWN BY: B. A. Dempier	DISTRICT NO. 1
DATE: May 29, 1963	SCALE: 1" = 50'
APPROVED BY	
<i>W. Beach</i> COUNTY ENGINEER	DATE: 5/29/63
DRAWING NO. 63U-2	
SHEET 1 OF 5	
Panels: 9	

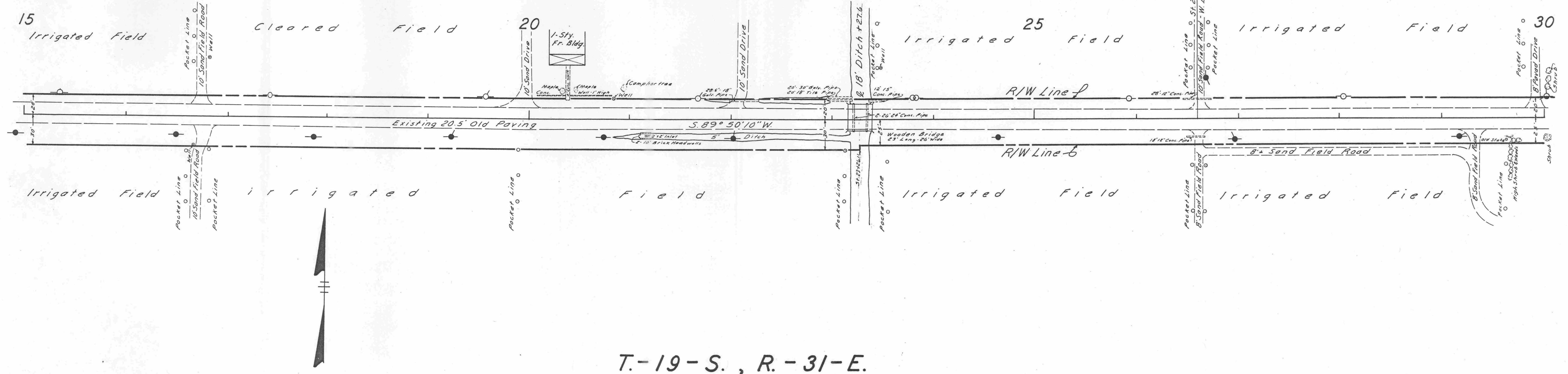
FOR INFORMATION PURPOSES  
SUBJECT TO REVISIONS

MAR 04



G O V ' T . L O T 4

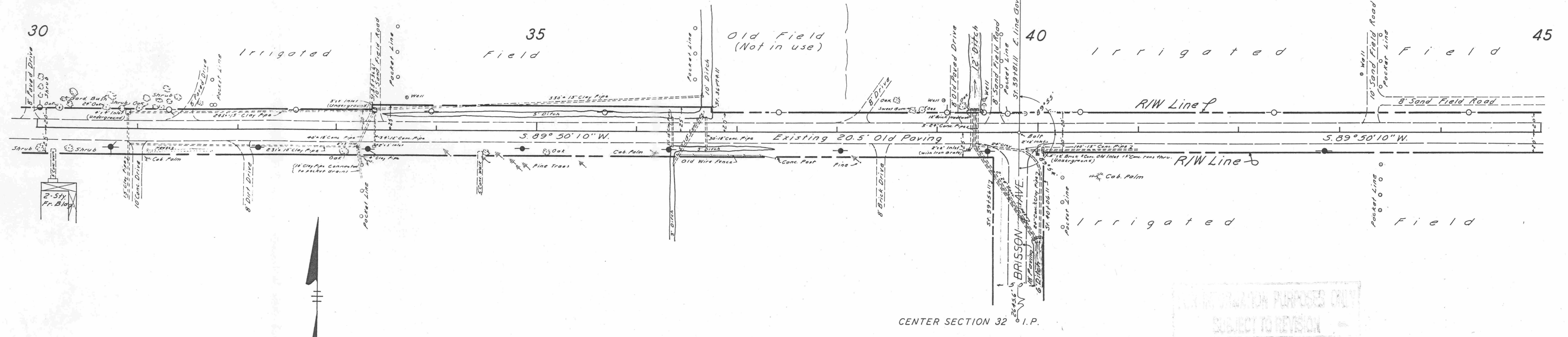
G O V ' T . L O T 3



T-19-S., R-31-E.

G O V ' T . L O T 3

G O V ' T . L O T 2



T-19-S., R-31-E.

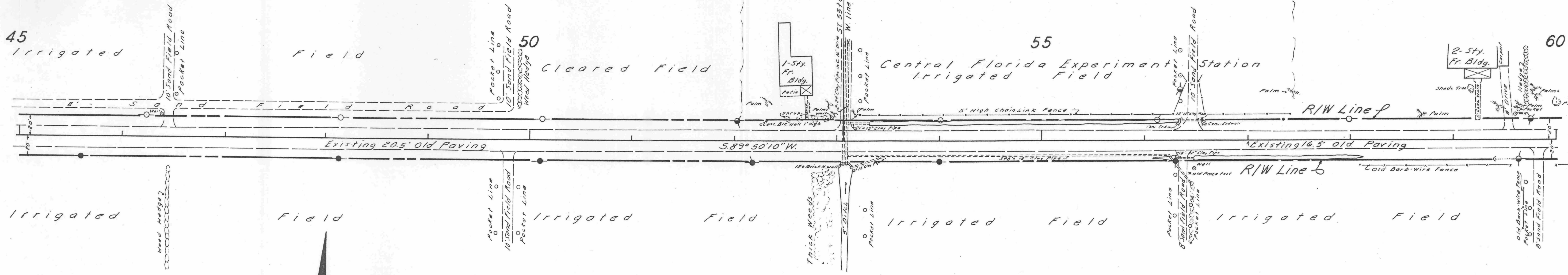
CENTER SECTION 32 I.P.

FOR INFORMATION PURPOSES ONLY  
SUBJECT TO REVISION

MAR 04 1997

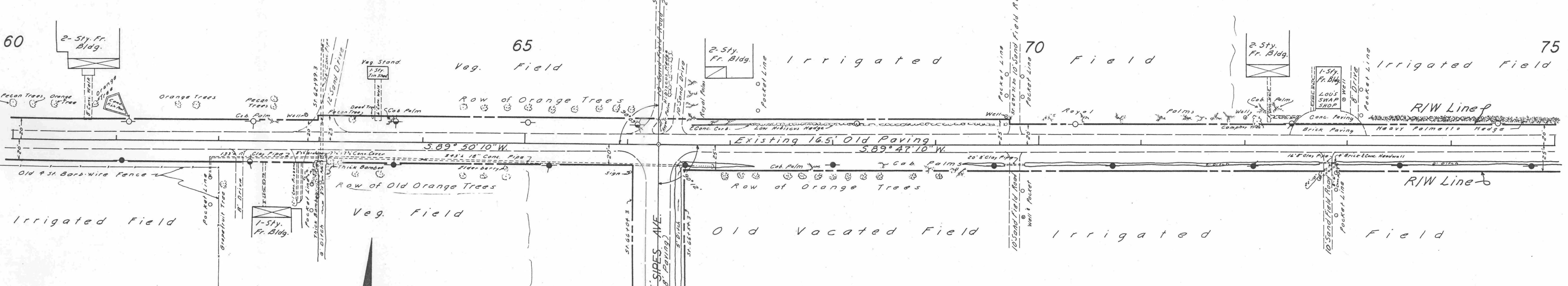


G O V ' T . L O T 2 G O V ' T . L O T 1

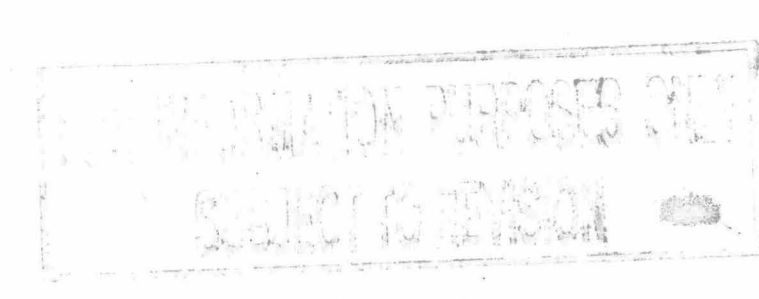


T-19-S, R-31-E.

G O V ' T . L O T 1 G O V ' T . L O T 4



T-19-S, R-31-E.

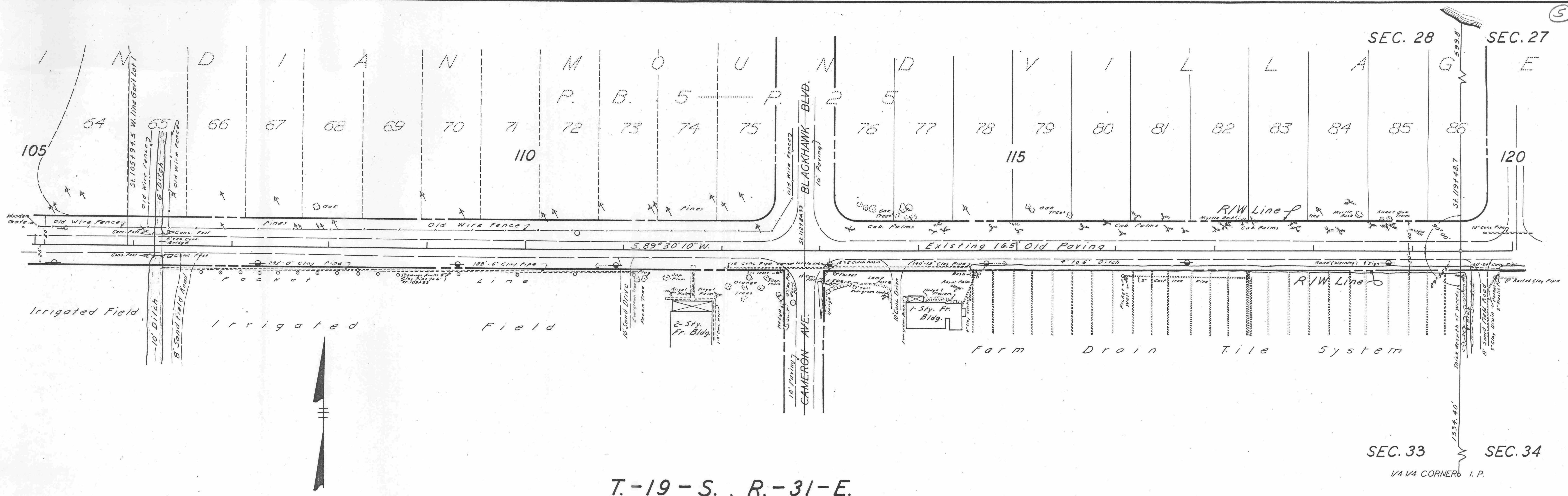


MAR 04 1997

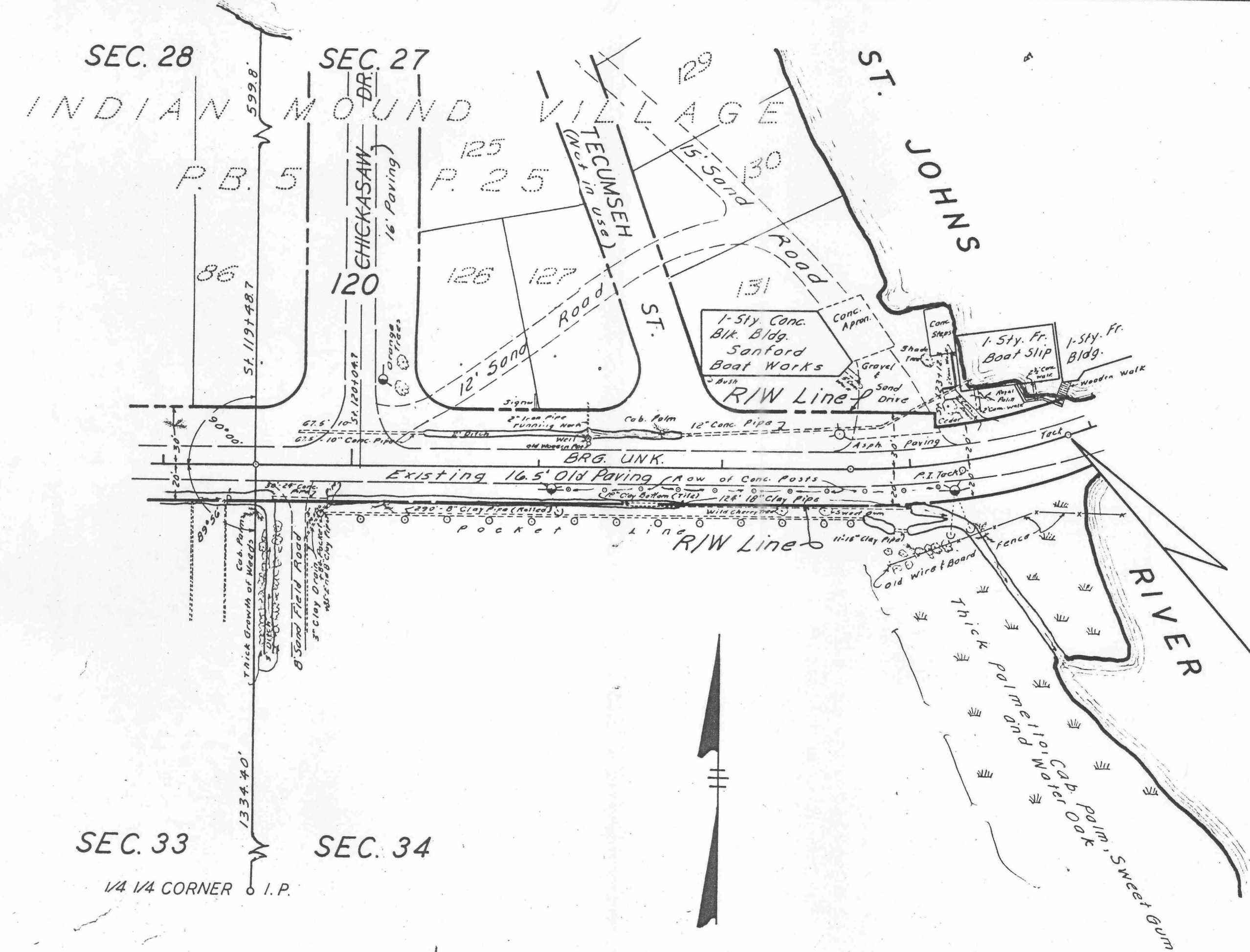








T-19-S., R-31-E.



T-19-S., R-31-E.

RIGHT OF WAY			
FROM STATION	TO STATION	R/W WIDTH	REMARKS
<b>NORTH OF CENTER LINE</b>			
0+00	3+33.88	30ft.	MAYFAIR SEC. 1ST. ADD. P.B. 13-P.69
3+33.88	13+36.62	30ft.	PACE ACRES SUBDIVISION P.B. 3-P.21
13+36.62	33+36.61	20ft.	Official action by Board of Orange County Commissioners, Dec. 3, 1907.
33+36.61	36+74.11	25ft.	Plat of Survey by Fred T. Williams, Surveyor. 10-9-33
36+74.11	62+99.3	20ft.	Official action by Board of Orange County Commissioners, Dec. 3, 1907.
62+99.3	69+71.30	25ft.	Plat of Survey by Fred T. Williams, Surveyor. 6-5-33
69+71.30	86+16.30	20ft.	Official action by Board of Orange County Commissioners, Dec. 3, 1907.
86+16.30	89+66.30	25ft.	Plat of Survey by Fred T. Williams, Surveyor. 7-30-17
89+66.30	92+91.3	20ft.	Official action by Board of Orange County Commissioners, Dec. 3, 1907.
92+91.3	96+23.3	25ft.	Deed Book 89 Page 324
96+23.3	97+46.6	20ft.	Official action by Board of Orange County Commissioners, Dec. 3, 1907.
97+46.6	102+01	30ft.	Official Record Book 53 Page 393
102+01	103+00.2	30ft.	Seminole County Commissioners Minutes Book 11 Page 35
103+00.2	123+12.3	30ft.	INDIAN MOUND VILLAGE P.B. 5-P.25
123+12.3	123+87.45	20ft.	Official action by Board of Orange County Commissioners, Dec. 3, 1907.
<b>SOUTH OF CENTER LINE</b>			
0+00	10+04	20ft.	Official action by Board of Orange County Commissioners, Dec. 3, 1907.
10+04	23+26.11	30ft.	Official Record Book 73 Page 339
23+26.11	39+56.11	25ft.	Plat of Survey by Fred T. Williams, Surveyor. 8-28-33
39+56.11	40+06.11	20ft.	Official action by Board of Orange County Commissioners, Dec. 3, 1907.
40+06.11	66+54.3	25ft.	Deed Book 149 Page 257
66+54.3	73+24.3	25ft.	Deed Book 83 Page 324
73+24.3	76+56.8	25ft.	Official Record Book 379 Page 35
76+56.8	77+96	25ft.	Official action by Board of Orange County Commissioners, Dec. 3, 1907.
77+96	123+87.45	20ft.	Official action by Board of Orange County Commissioners, Dec. 3, 1907.

FOR INFORMATION PURPOSES ONLY  
SUBJECT TO REVISION

MAR 04 1997